

Intelligent 2-wire positioners – EPP2000

Positioner ready to suit the most extreme environments in the oil and gas industry all over the world

General specifications

More than 15 years of experience in conjunction with the latest technology, has created the best smart valve positioner in the market which suits any pneumatic rotary, linear, double acting (DA) and spring return (SR) actuator on the market.

The housings are in AISI 316 stainless steel, which makes the positioners resistant to extreme external impacts and environments. The positioners are very reliable due to the flexible software and few moving mechanical parts. The well proven software automates the calibration process, contains internal failure detection and several default flow curves. Customized flow curves are easily defined and the setpoint of the positioner and the deadband can be adjusted from the user menu.

Certification for use in hazardous area

- ATEX 94/9-EC
- II 1G Ex ia IIC T4-T6

Electrical functions

- 2-wire positioner, power from control signal
- Control signal : 4-20mA, 11,5-30VDC, 550Ω
- Position feedback : 4-20mA, 5-30VDC, 250Ω

Electrical connections

- Cable gland: 2 x M20x1,5
- Terminals: 0.2 – 2.5 mm²

Performance

- Operating temperature : -20°C to 70°C
- Linearity : <1%
- Repeatability : 0,2%
- Air consumption : ≈ 0, only using air when moving.
- Actuator rotation : 40-300° CW/CCW

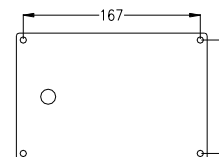
Enclosure: Material and construction

- Dimensions: LxHxW 185x120x125/130mm.
- Weight: 3,5 kg
- Enclosure in AISI-316 stainless steel
- Ingress protection to IP-66 according to EN 60529
- Impact Test to IK-08 according to EN 50102

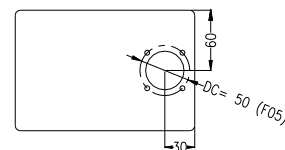
Mounting

Mounting options

- Baseplate mounting (standard), or



- Mounting according to F05, ISO 5211/1, VDE/VDI-3845 (stock code + 111412)



Mounting Brackets

- Mounting brackets are available for all common actuators and valves
- All Brackets come as mounting kits for directly mounting on the actuator/valve

Product pictures



EPP2000 SR-HC

EPP2000 SR-HC

Positioner for spring return actuator

Specifications for EPP2000 SR-HC

Actuator type	: Spring Return
Fail mode	: Fail open/close
Air supply	: 3-8bar
Air flow in	: QN=485l/min
Air flow out	: QN=200l/min
Manifoldblock	: 2 x 1/4"NPT

Stock codes

Standard positioner	
Stock code	: 101512/R

EPP2000 DA - OBSOLETE

Positioner for double acting actuator

Specifications for EPP2000 DA

Actuator type	: Double Acting
Fail mode	: Fail stay
Air supply	: 4-8bar
Air flow in	: QN=1066l/min
Air flow out	: QN=438l/min
Manifoldblock	: 3 x 1/4"NPT

Stock codes

Standard positioner	
Stock code	: 101610/R