

Val Controls Diagnostic Centre

Installation manual

Table of contents

1	General.....	3
1.1	System requirements	3
1.2	Software.....	3
2	Installation.....	4
2.1	Val Controls Diagnostic Centre.....	4
2.2	PACTware	4
2.3	HART Com DTM.....	4
2.4	Val Controls DTM.....	4
3	PACTware configuration.....	5
4	Start VCDC from PACTware	8
5	Yokogawa PRM	9

1 General

This document describes how to install Val Controls Diagnostic Centre (VCDC).

1.1 System requirements

Operating system: Windows 10 and Windows 11

Programs: Microsoft Word

For older versions of Windows please contact support.

The user must be local administrator on the PC.

Minimum requirements for the hardware

Screen resolution: 1024 pixels times 768 pixels

Processor: Pentium 4 or equivalent

RAM: 256 MB

Disk space: 400 MB

1.2 Software

To install VCDC you need the following software.

- Val Controls Diagnostic Centre (DDC-SW-001)

For HART compatibility

- Val Controls DTM (DDC-SW-002)
- PACTware 4.1 from ICS
(http://www.icsgmbh.com/english/PACTware_download.htm)
- HART CommDTM for PACTware
(http://www.icsgmbh.com/english/PACTware_download.htm)

2 Installation

2.1 Val Controls Diagnostic Centre

- a) Run setup.exe and follow the instruction on the screen. Accept the default settings.
VCDC is now installed and can be started from the “Program Menu”.

For HART compatibility complete the following steps.

2.2 PACTware

- a) Install PACTware

2.3 HART Com DTM

- a) Install the DTM

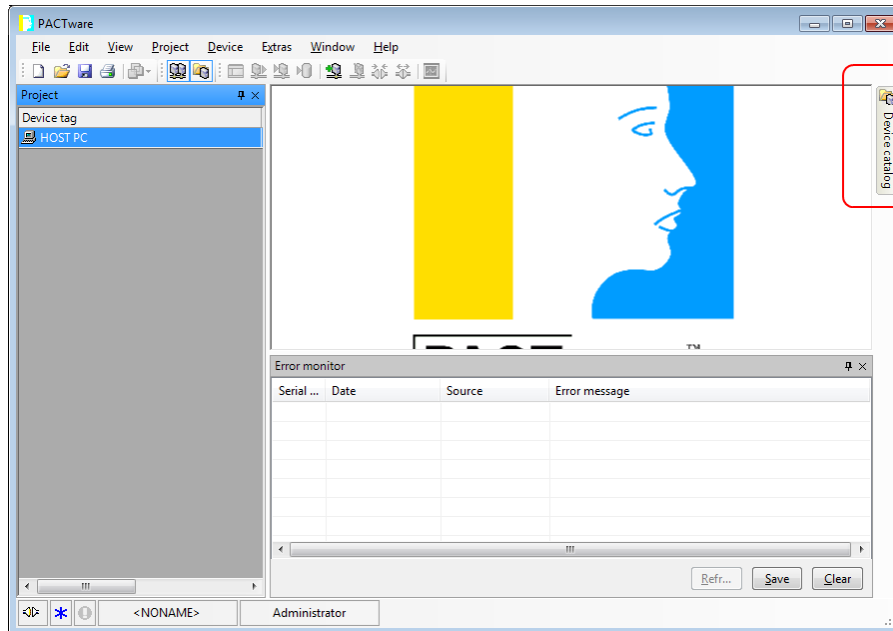
2.4 Val Controls DTM

- a) Run “ValControlDTM x.x.x.msi” and follow the instruction on the screen. Accept the default settings.

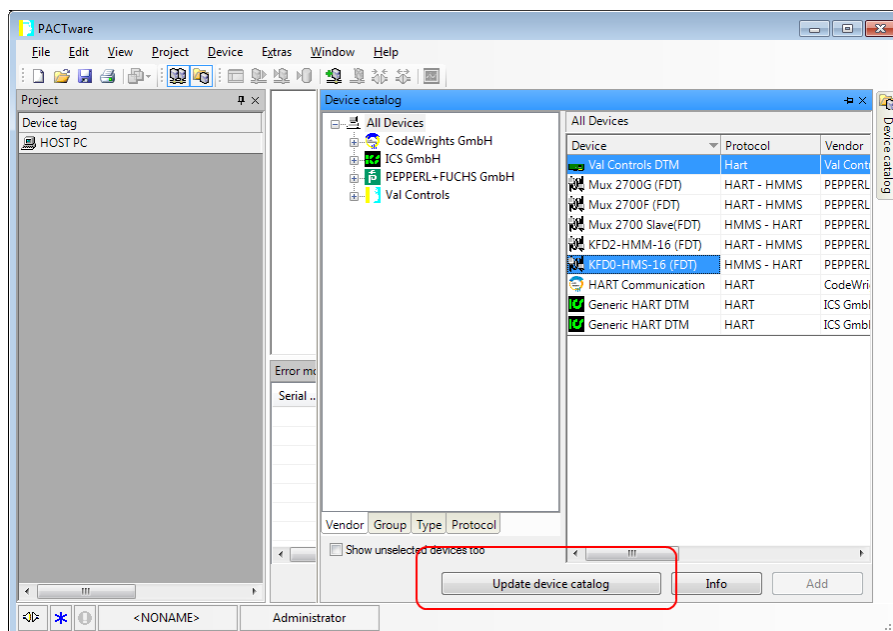
3 PACTware configuration

Start PACTware from the “Program menu”.

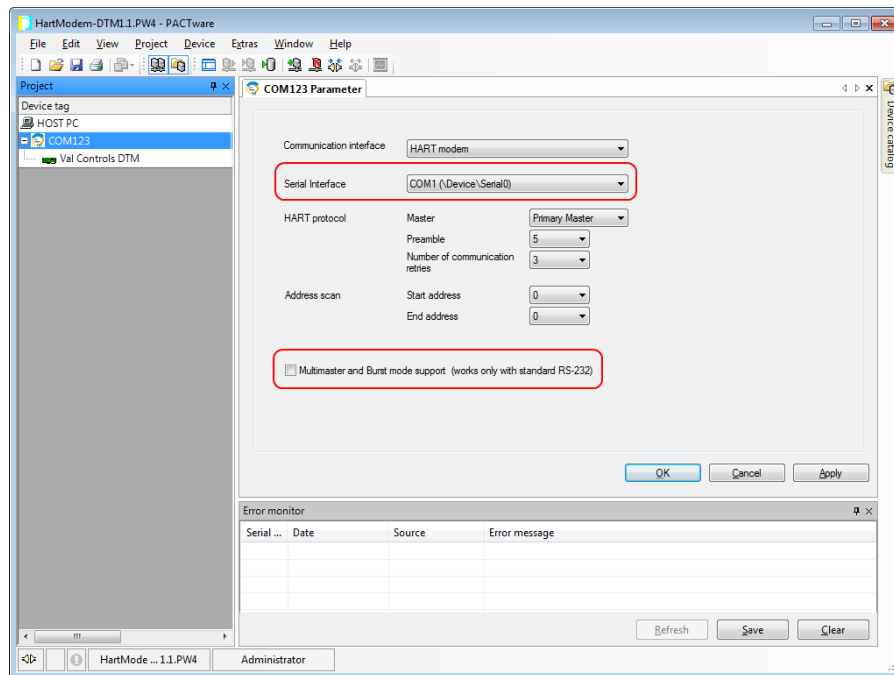
- 1) Open the “Device catalog” by pressing the button to the right.



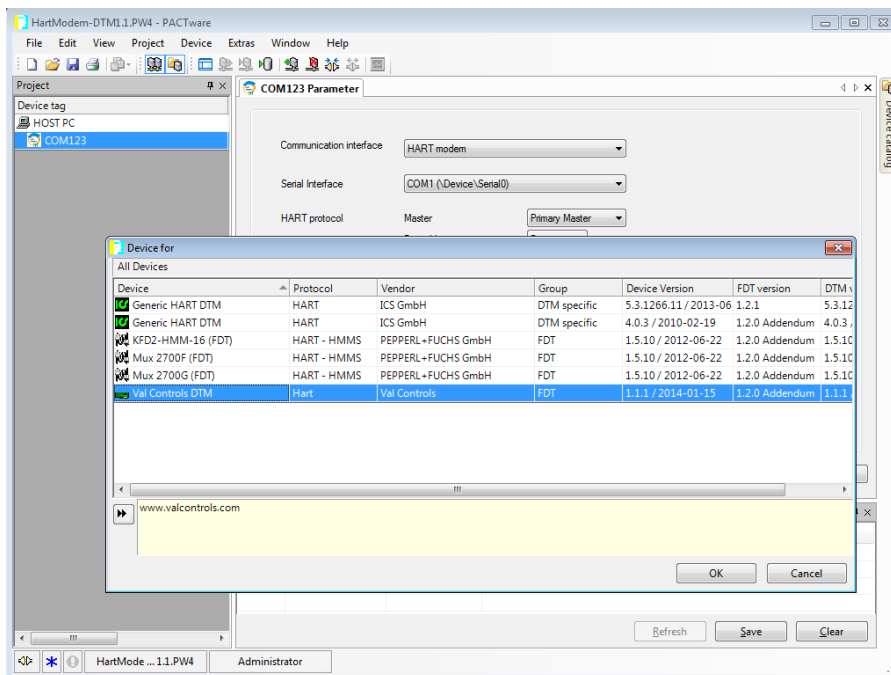
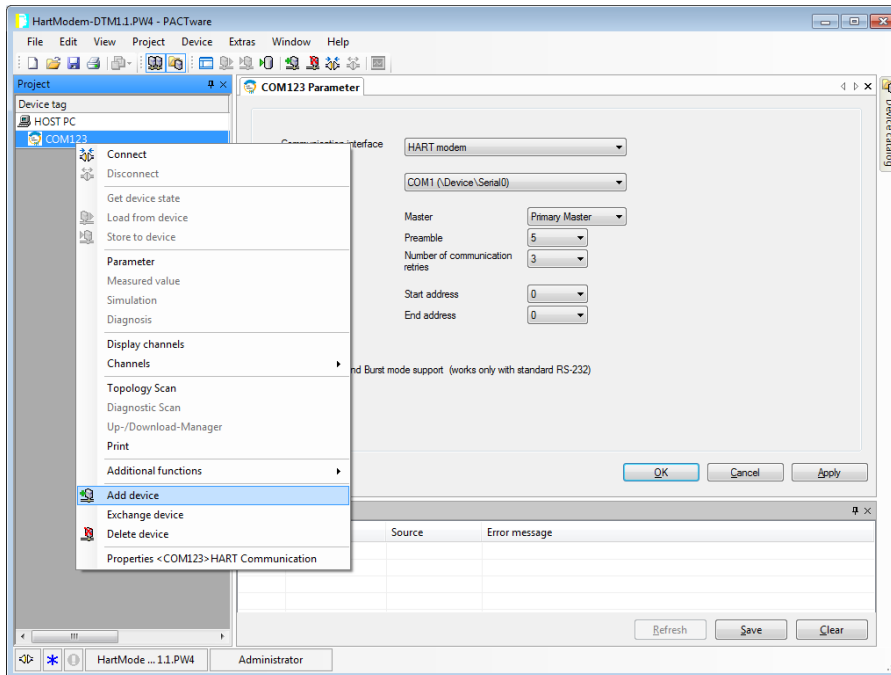
- 2) Press the “Update device catalog” button.



- 3) Add the “HART Communication” DTM and choose the correct COM port
- 4) Remove checkmark in ”Multi master and Burst mode support”



5) Add the Val Controls DTM

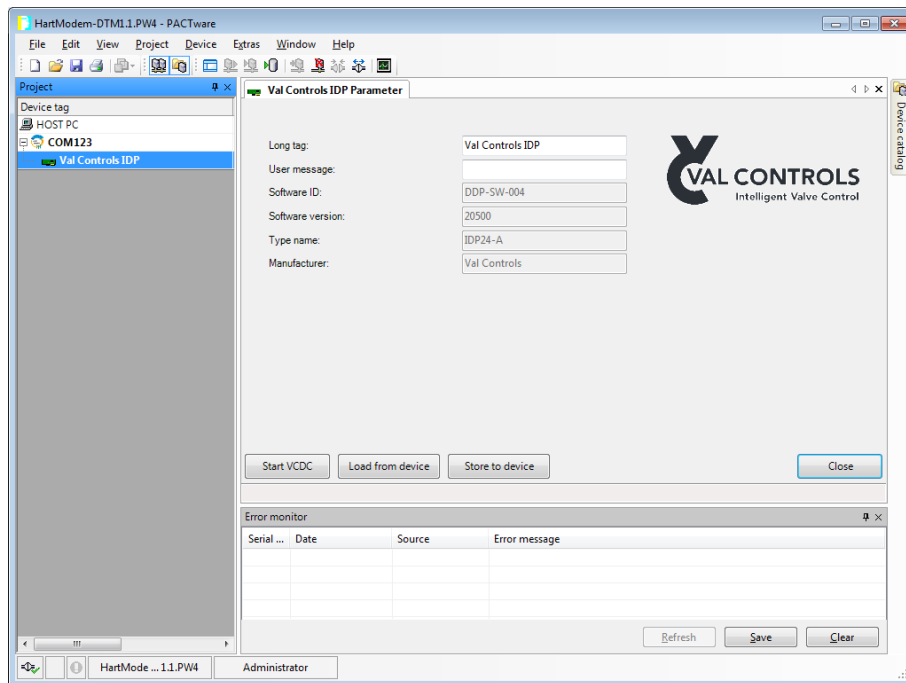


6) Save the configuration as "ValControls.PW4".

4 Start VCDC from PACTware

Connect to the device and open the Val Controls DTM.

Press “Start VCDC” to start Val Connect Diagnostic Centre with a connection to selected device.

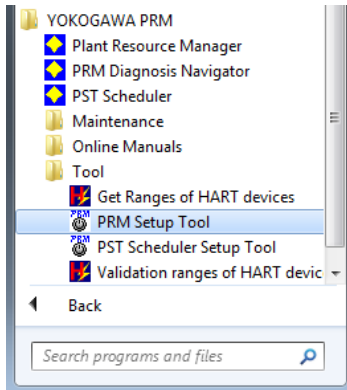


5 Yokogawa PRM

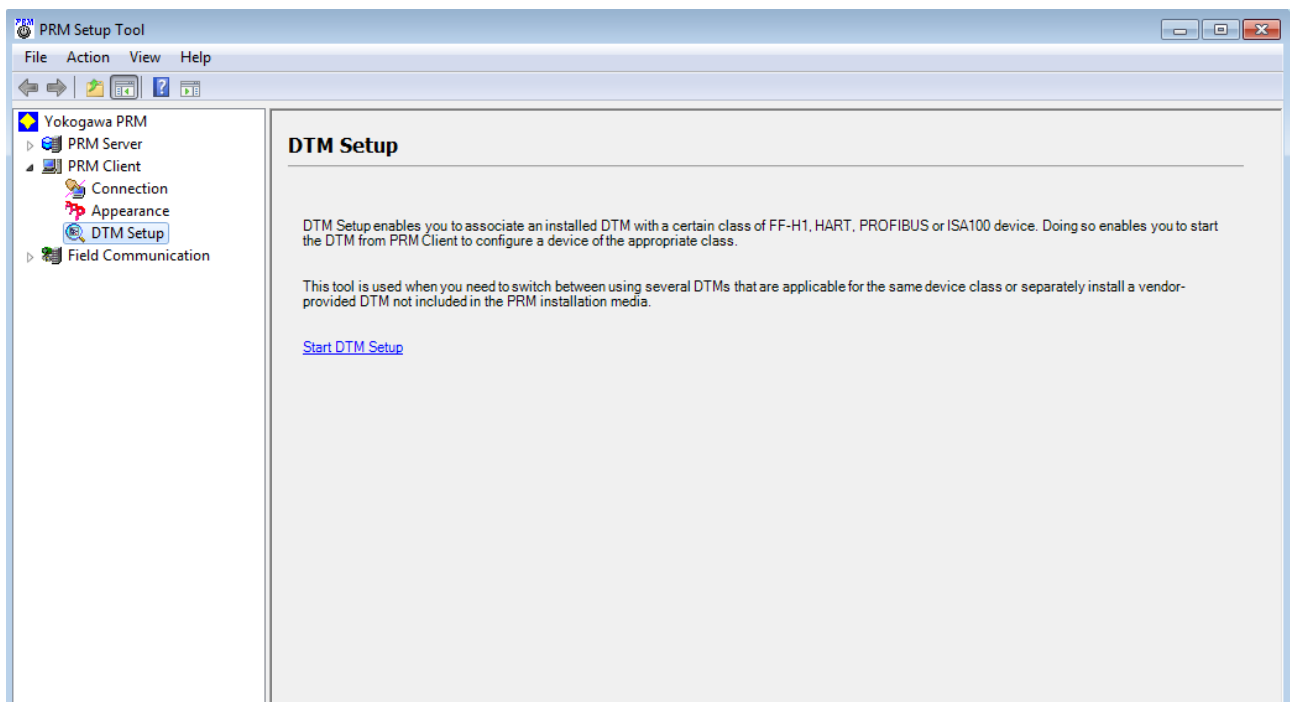
This guide is based on Yokogawa PRM R3.11.20.

Install the Val Controls DTM as explained in section 2.4.

To import the DTM in Yokogawa PRM start “PRM Setup Tool”



Start the “DTM Setup” by clicking on the blue text “Start DTM Setup”.



Allow the DTM Setup to update the database.

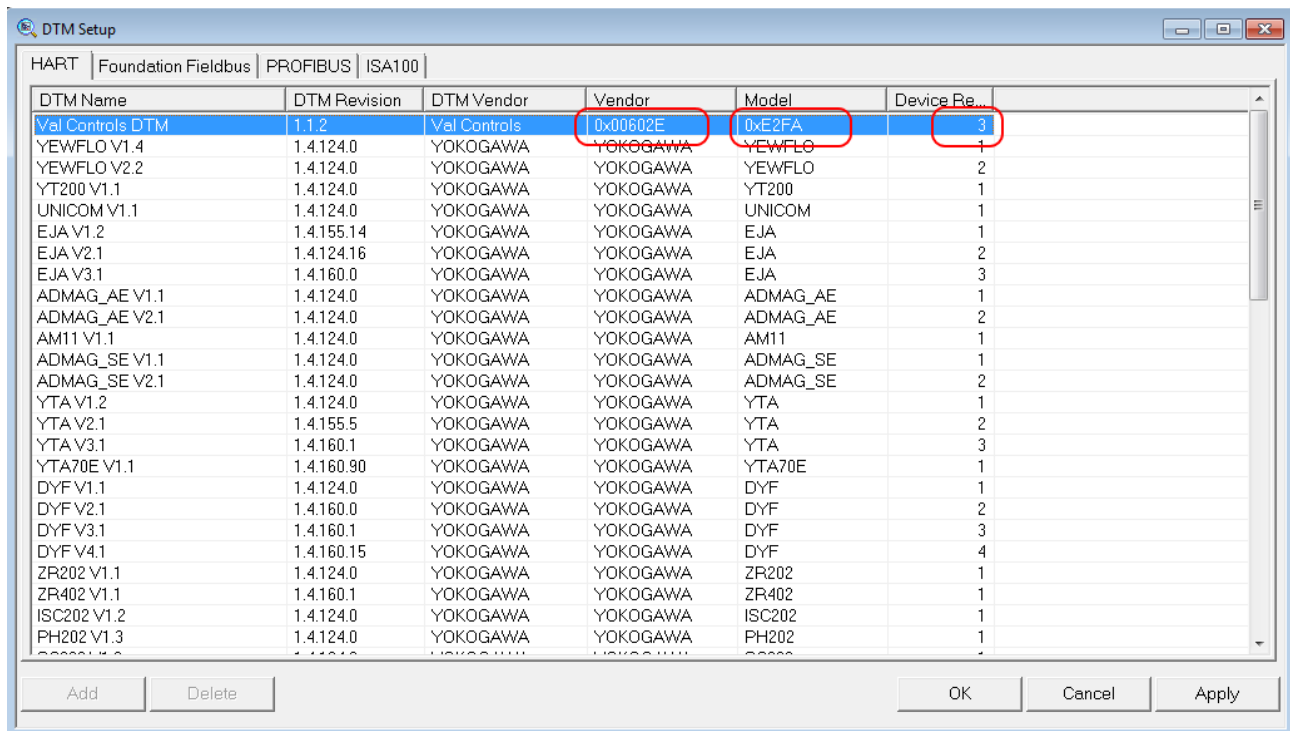
The Val Controls Vendor ID and Model ID are not available in PRM and must be entered manually.

Vendor: 0x00602E

IVC24: 0xE1F0

IDC24: 0xE2FA

Revision: Contact Val Controls



5.1 Change the Tag

- 1) Start the parameter manager for the device
- 2) Select Tag in the drop down box
- 3) Update Device Values
- 4) Change the tag
- 5) Download Checked Parameters to the device
- 6) Exit parameter manager and perform a plug&play